

Valves series A1

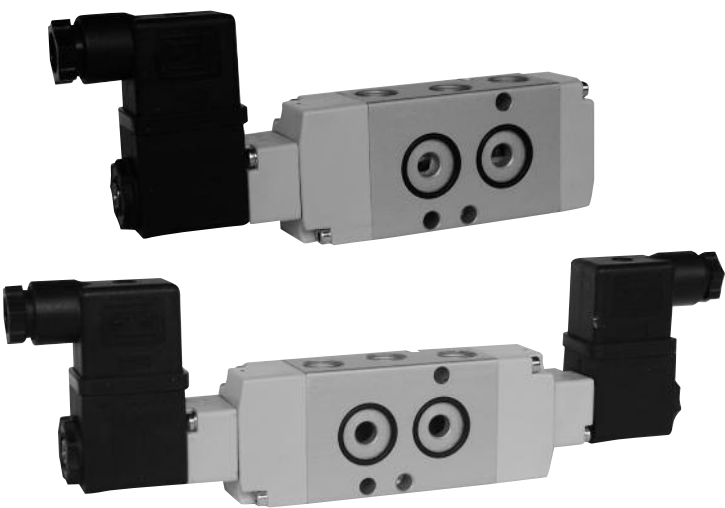
1/4", 3/2 - 5/2, NAMUR interface, electrically operated



Executions			
Version	Symbol	Code	Item
3/2 NC solenoid/spring		034059	A1NE230
3/2 solenoid/solenoid		034060	A1NE232
5/2 solenoid/spring		034057	A1NE250
5/2 solenoid/solenoid		034058	A1NE251

On request, they can be supplied according Directive 94/9/EC - **ATEX**

CE **II 2 GDc T5**



Series of spool valves, with static seals, high flow, for mounting on NAMUR interface.
 Coils and connectors are to be ordered separately.
 For the coils type ASA12... see page 2.200.1
 For the connectors type A122... see page 2.210.20

Code key

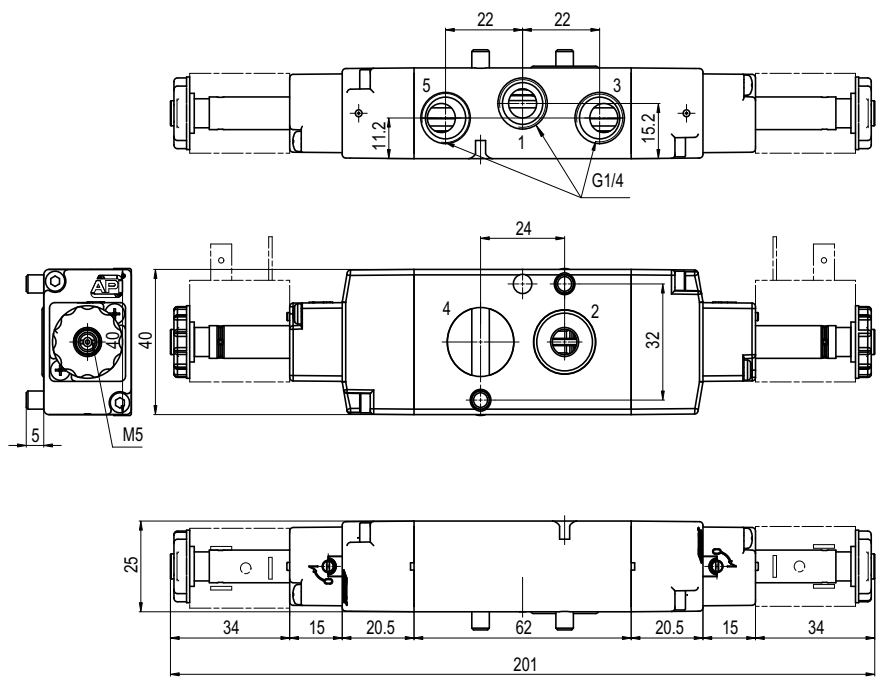
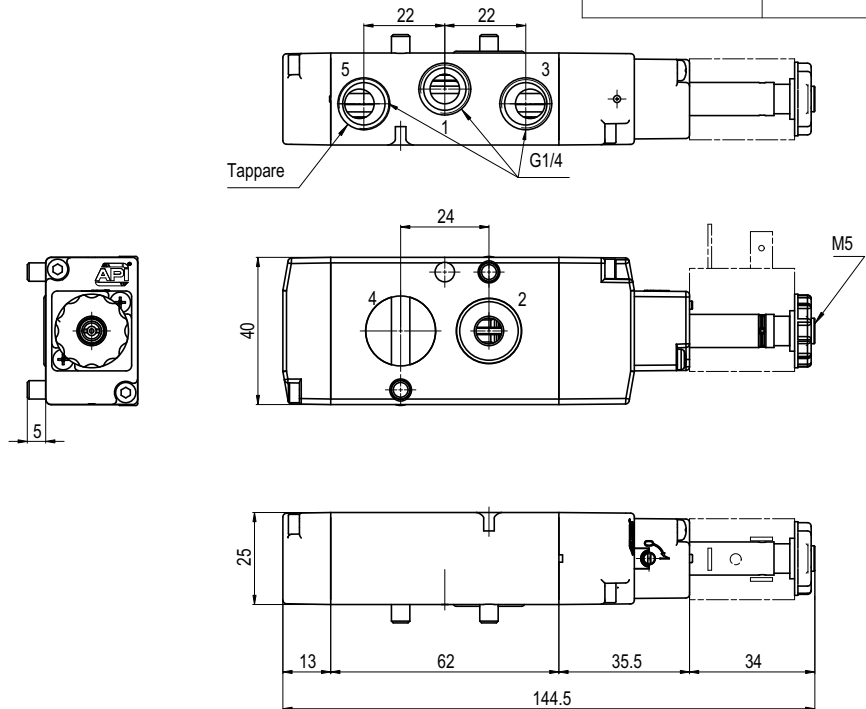
Series	Actuation	Size	Function
A1	NE= NAMUR electrical	2 = 1/4"	30 = 3/2 NC 32 = 3/2 solenoid/solenoid 50 = 5/2 solenoid/spring 51 = 5/2 solenoid/solenoid

Technical data		
Fluid	Compressed filtered air with or without lubrication. Lubrication, if be used, must be continous.	
Pressure range	1 ÷ 10 bar	
Temperature range	-10°C ÷ +60°C	
Orifice	7 mm	
Flow	1.000 NI/min at 6 bar with ΔP 1 bar	
Minimum piloting pressure	1,5 bar	Minimum external air pressure: 1,5 bar
Mounting	In any position	
Manual override	Two stable positions	
Response time	Energising:	De-energising:
Materials	Body: Heads: Spool: Distancers: Seals:	Die-cast painted aluminium Plastic Chemical nickel plated aluminium Plastic Nitrile rubber (NBR)

Valves series A1
1/4", 3/2, NAMUR interface, electrically operated



Version	Symbol	Code	Item
3/2 NC solenoid/spring		034059	A1NE230

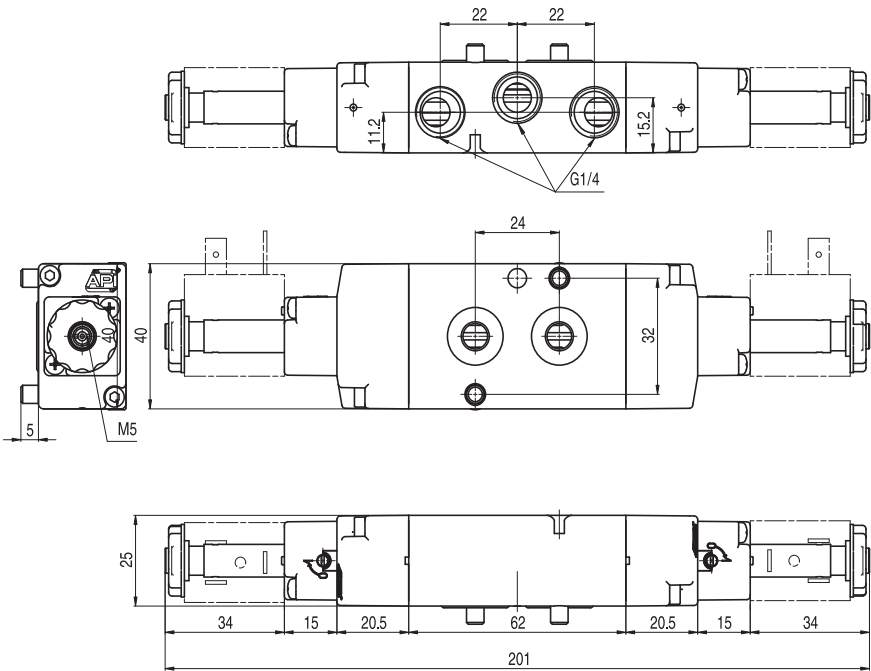
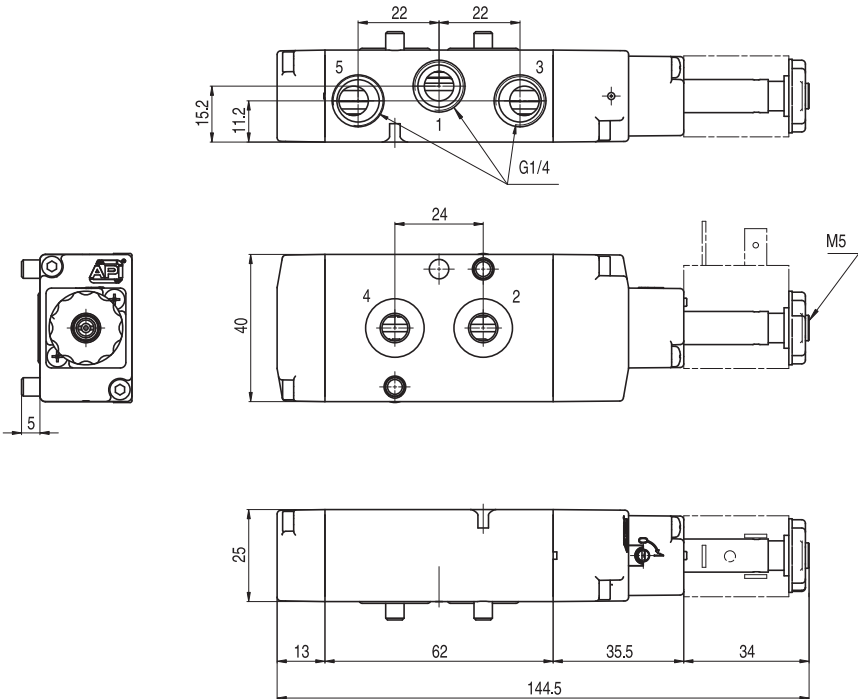


Version	Symbol	Code	Item
3/2 solenoid/solenoid		034060	A1NE232

Valves series A1
1/4", 5/2, NAMUR interface, electrically operated



Version	Symbol	Code	Item
5/2 solenoid/spring		034057	A1NE250



Version	Symbol	Code	Item
5/2 solenoid/solenoid		034058	A1NE251